

VENTILATION / FANS

WALL & CEILING GRILLES

Fixed Louvre grilles are manufactured from an ABS, UV stabilised polymer. Easily installed via four screw holes located behind the removable face. Suitable for both internal and external applications and can be either mounted on ceilings or walls. Fixed Louvre grilles come in three popular colours and are generally used in exhaust applications. Duct is able to be installed onto a neck located at the rear of the grille.

Code Prefix:
SEC / Fixed Louvre



SIZE	CODE GREY	PRICE	CODE WHITE	PRICE	CODE TERRACOTTA	PRICE
100mm (4")	SECD0024		SECD 0025		SECD 0026	
120mm (5")	SECD0039		SECD 0041		SECD 0040	
150mm (6")	SECD0062		SECD 0063		SECD 0064	
200mm (8")			SECD 0340			
230/250mm			SECD 0073			

Gravity grilles are manufactured from an ABS, UV stabilised polymer. Easily installed via four screw holes located behind the removable blades. Suitable for wall mounted applications both internally and externally and come in three popular colours and are generally used in exhaust applications. Gravity grilles open via airflow from attached fan systems. Duct is able to be installed onto a neck located at the rear of the grille.

Code Prefix:
SEC / Gravity Grille



SIZE	CODE GREY	PRICE	CODE WHITE	PRICE	CODE TERRACOTTA	PRICE
100mm (4")	SECD0028		SECD 0029		SECD 0027	
120mm (5")	SECD0042		SECD 0044		SECD 0043	
150mm (6")	SECD0061		SECD 0066		SECD 0065	

All prices **DO NOT** include GST.

www.westaflex.com.au

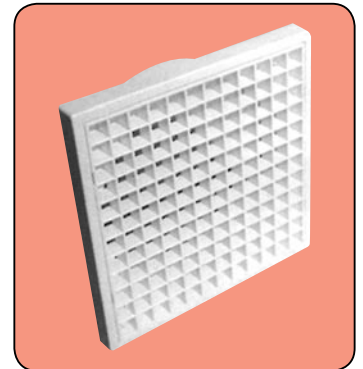
E 12 - August '08 Issue

VENTILATION / FANS

WALL & CEILING GRILLES

Eggcrate grilles (ERG's) are manufactured from an ABS, UV stabilised polymer. Easily installed via four screw holes located behind the removable ERG centre. Suitable for wall or ceiling mounted applications both internally and externally and come in the colour white. Generally used in exhaust applications. Duct is able to be installed onto a neck located at the rear of the grille.

Code Prefix:
SEC / ERG



CODE WHITE	SIZE	PRICE
SECD0375	100mm (4")	
SECD0472	120mm (5")	
SECD0473	150mm (6")	

INSECT MESH FOR ABOVE GRILLES

CODE	SIZE	DESCRIPTION	PRICE
SECD0371	100mm (4")	To Suit 100mm Grilles	
SECD0208	120mm (5")	To Suit 120mm Grilles	
SECD0207	150mm (6")	To Suit 150mm Grilles	
SECD0373	250mm (10")	To Suit 200mm & 250mm Grilles	

All prices **DO NOT** include GST.

www.westaflex.com.au

VENTILATION / FANS

POLY ROUND DIFFUSERS

Our round ceiling diffusers are made from A.B.S (Acrylonitrile Butadiene Styrene) plastic, which is the same type of plastic that is used in products like telephones, fridge liners, hard hats and televisions.

The smooth curve of the outside flange gives an attractive and unobtrusive finish. It is the same smooth curve that is used on our other plastic products. So when you purchase Westaflex manufactured product, you get a job that is aesthetically pleasing throughout your home, built to last.

» CONSTRUCTION

Unijets

Unijets have been designed not to just “dump” the air straight down like other similar diffusers. The Unijet disperses the air over a greater area because its louvres are at different angles. This gives a more even dispersement of air in the desired room or space.

Cone Centre

Cone Centres are designed to suit reverse cycle systems. Cone Centres allow adjustable control of the airflow by moving the centre of the diffuser up or down. This is achieved by a screwing technique. Clockwise decreases and shallows the airflow while anti-clockwise increases and deepens the airflow.

Spidervents

Spidervents were designed for ventilation from toilets, laundries etc in all classes of building. With its fast fixing capabilities and good free area, it is unique.

All Poly Round Diffusers have the following benefits

- Quick Fit Fixing Clips in either single or twin spring operation
- Resistant to scratching & fading
- Manufactured from ABS plastic
- Positive lock duct tabs
- Meets Building Code of Australia (BCA) for commercial installations eg, supply air & toilet exhaust.

ORDER CODE	DESCRIPTION	SIZE	PRICE
730006	Unijet	150mm (6")	
730008	Unijet	200mm (8")	
730010	Unijet	250mm (10")	
730106	Cone Centre	150mm (6")	
730108	Cone Centre	200mm (8")	
730110	Cone Centre	250mm (10")	
730112	Cone Centre	300mm (12")	
730206	Spidervent	150mm (6")	
730208	Spidervent	200mm (8")	

Code Prefix:
7300/Unijet



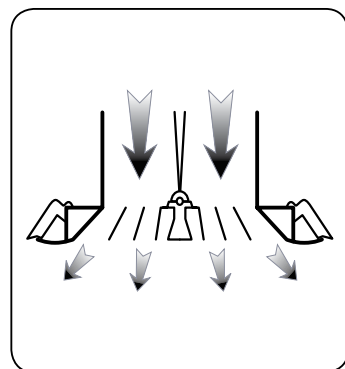
Code Prefix:
7301/Cone Centre



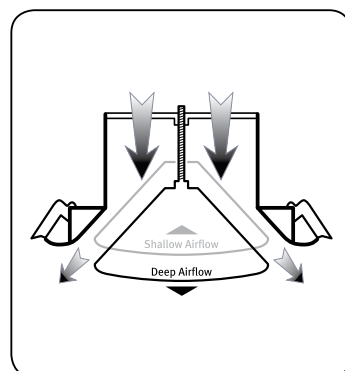
Code Prefix:
7302/Spidervent



Unijet
Cross Section



Cone Centre
Cross Section



All prices **DO NOT** include GST.

www.westaflex.com.au

VENTILATION / FANS

UNIVENTS

Discover the opportunity that UNIVENTS give you to complete a job quicker and leave it looking better. Our engineers have developed the next generation UNIVENTS that not only work better, but are easier to work with.

The UNIVENT PLUS for instance, simply SNAP into the adaptor then pull back the spring loaded clips and SNAP the whole assembly into the pre-cut ceiling hole. There is now no need for you to balance on a ladder and push clips into place.

EASIER, FASTER, SAFER Installation, the way it should be.

» CONSTRUCTION

Univent (fixed blades)

Univent Fixed Blade model is the economy version of the highly successful Univent range. Specifically manufactured for the builders market to cover a large range of applications without having to stock different products. Available in four popular sizes with multiple neck adaptors to suit most flexible duct sizes.

Univent PLUS (moving blades)

The latest release in our range of Univents, the Plus has improved benefits over all other similar diffusers available. With lock in biscuits, "Snap Down" fixing clips, flexible frame and more the Plus will take you to the next level.

Univent ERG (eggcrate cores)

Univent ERG's were designed for the ventilation market where easy installation, colour fast diffusion or extraction is a requirement. As per the rest of the Univent range, available in all the same sizes and come with eggcrate cores instead of louvre blades.

Univent Diffusers have the following benefits

- SNAP IN Fixing Clips (PLUS)
- Resistant to scratching & fading
- Manufactured from H.I.P.S plastic
- Flexible frames for uneven roofs
- Blades move in unison (moving blade product)
- Minimum roof shadowing
- Flush face blades

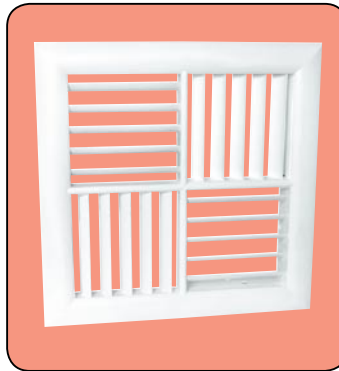
» AVAILABLE IN THE FOLLOWING SIZES

SIZE METRIC	225 x 225	300 x 300	375 x 375	375 x 550
SIZE IMPERIAL	9 x 9"	12 x 12"	15 x 15"	15 x 22"
Univent (fixed)	•	•	•	•
Univent Plus	•	•	•	•
Univent ERG	•	•	•	•

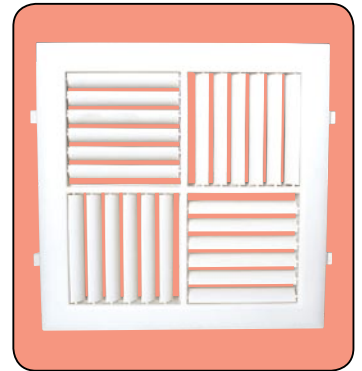
» ORDERING EXAMPLE

Example 1: Univent Plus 300 x 300mm, the code would read **72341212**
Refer to Pages **D 1** & **D 5** for prices

Code Prefix: 7231 / Fixed Blade



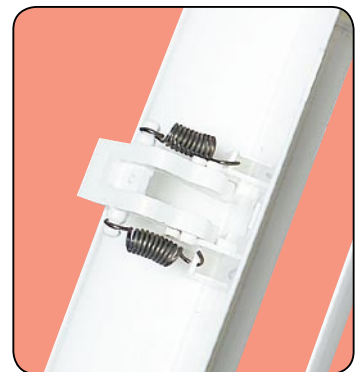
Code Prefix: 7234 / Plus



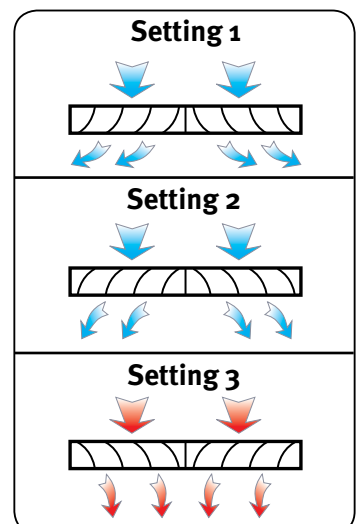
Code Prefix: 7210 / ERG



Plus Fixing Clips



Fixed Blade Configurations



All prices **DO NOT** include GST.
www.westaflex.com.au

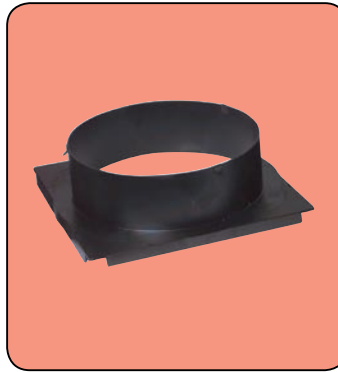
VENTILATION / FANS

POLY ADAPTORS

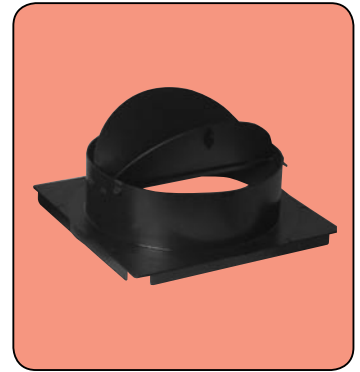
Poly Adaptors are manufactured from a High Impact Polystyrene plastic. They are available with or without dampers and simply “snap on” to the rear of Univents, CD-2000’s or a selection of aluminium diffusers. They are available in a range of sizes from 225 x 225 with a 150mm Duct Collar to 375 x 550mm with a 450mm Duct Collar.

NOTE: W/D: With Dampers
N/D: No Dampers

Code Prefix: 7310



Code Prefix: 7317



CODE	SIZE	DESCRIPTION	PRICE
73100906	225 x 225 x 150mm (9 x 9 x 6")	Poly Adaptor N/D	
73100908	225 x 225 x 200mm (9 x 9 x 8")	Poly Adaptor N/D	
73101208	300 x 300 x 200mm (12 x 12 x 8")	Poly Adaptor N/D	
73101210	300 x 300 x 250mm (12 x 12 x 10")	Poly Adaptor N/D	
73101212	300 x 300 x 300mm (12 x 12 x 12")	Poly Adaptor N/D	
73101510	375 x 375 x 250mm (15 x 15 x 10")	Poly Adaptor N/D	
73101512	375 x 375 x 300mm (15 x 15 x 12")	Poly Adaptor N/D	
73101514	375 x 375 x 350mm (15 x 15 x 14")	Poly Adaptor N/D	
73101516	375 x 375 x 400mm (15 x 15 x 16")	Poly Adaptor N/D	
73102216	375 x 550 x 400mm (15 x 22 x 16")	Poly Adaptor N/D	
73102218	375 x 550 x 450mm (15 x 22 x 18")	Poly Adaptor N/D	

73170906	225 x 225 x 150mm (9 x 9 x 6")	Poly Adaptor W/D	
73170908	225 x 225 x 200mm (9 x 9 x 8")	Poly Adaptor W/D	
73171210	300 x 300 x 250mm (12 x 12 x 10")	Poly Adaptor W/D	
73171212	300 x 300 x 300mm (12 x 12 x 12")	Poly Adaptor W/D	
73171510	375 x 375 x 250mm (15 x 15 x 10")	Poly Adaptor W/D	
73171512	375 x 375 x 300mm (15 x 15 x 12")	Poly Adaptor W/D	
73171514	375 x 375 x 350mm (15 x 15 x 14")	Poly Adaptor W/D	

» NOTE

A range of Metal adaptors are available. Refer page D 7.

All prices **DO NOT** include GST.

www.westaflex.com.au